

Skog og karbon – 3 sammenhenger

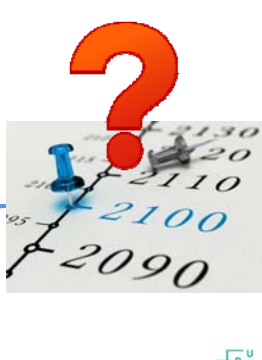
1. Boreal skog og skogsjord er et **stort** karbonlager
2. Skog kan binde ytterligere karbon
3. Bruk av skog-biomasse kan erstatte fossile produkter

The diagram shows a tree with arrows indicating the carbon cycle. CO2 is taken up by the tree (photosynthesis) and released back into the atmosphere (respiration). Plant litter (plantefall) and dead wood (dødt løvverk) are shown on the ground, with arrows indicating they release CO2 back into the atmosphere. The text 'Organisk karbon lagres i jord' (Organic carbon is stored in soil) is at the bottom.

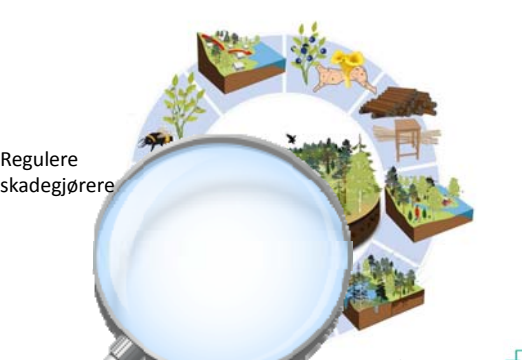
The NMBU logo is in the bottom right corner.

Skog og karbon

1. Boreal skog og skogsjord er et **stort** karbonlager
2. Skog kan binde ytterligere karbon
3. Bruk av skog-biomasse kan erstatte fossile produkter



NMBU




Regulere skadegjørere

Næringstilførsel

NMBU

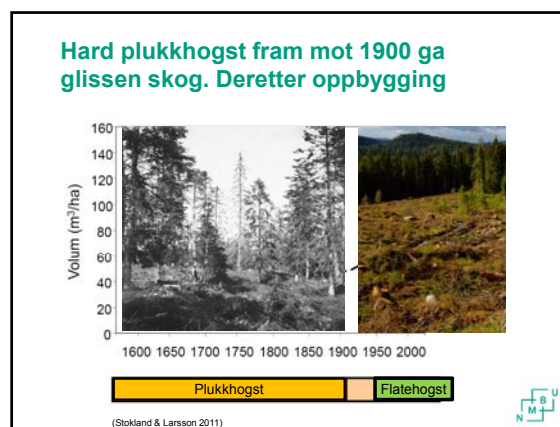
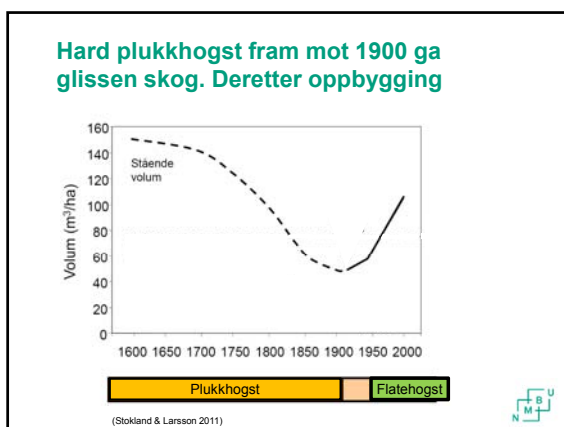
Døde trær: Nyttig rot!

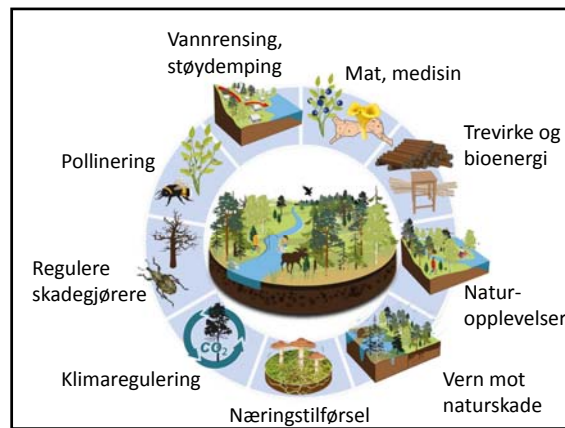
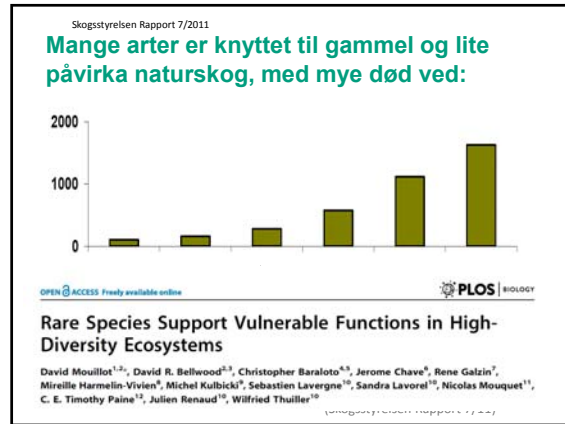
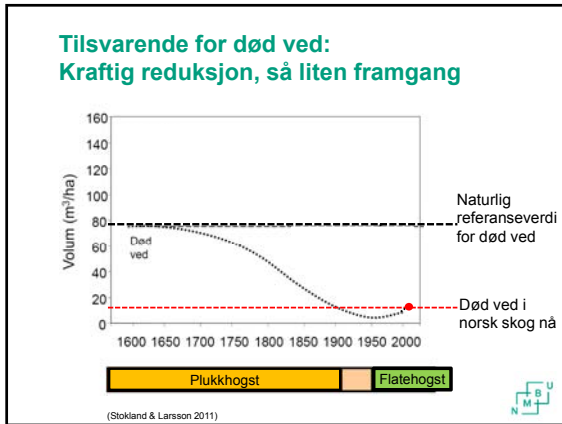


- Barnehage for småplanter
- Restaurant og bolig for sære sopp og småkryp
- Kontor for skogens ordenspatrolje
- Lagerplass for karbon, næring og vann

Levested for 1/3 av artene i skog

NMBU





Hjemmeside: www.nmbu.no/go/annesverdrupthygeson

Blogg:

- blogg.nmbu.no/insektokologene/
- kollokvium.no/

@annesver Anne Sverdrup-Thygeson